

City of Philadelphia: CHILD CARE FACILITIES FUND

OUR MISSION

The mission of the City of Philadelphia: Child Care Facilities Fund (CCFF) is to provide support to high quality early childhood education providers located in Philadelphia for the maintenance and improvement of their facilities to maintain a high level STAR rating. Providers may apply for a grant for facility improvements that fit in the category of minor to mid-level renovations and/or the purchase and installation of large appliances. The funding limits for the Fund are as follows:

\$25,000 for Commercial Center and Group Facilities

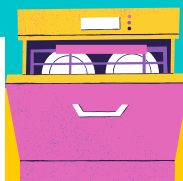
\$12,500 for Residential Family and Group Facilities

Did you know that the Facilities Fund can also help you meet and sustain best practices in health and safety protocols? Below are some suggested projects and how they can help to meet the guidelines and recommendations.

MAXIMIZE YOUR SPACE

Grant funds can go toward minor to mid-level renovations such as **outfitting alternative spaces** to be used as classroom space or the building of an **additional room**. Installing walls to **divide existing spaces**, **extending half-walls** to the ceiling to reduce noise levels, or purchasing **partition walls** to separate space are also ways to meet best practices. Also, consider purchasing **tables**, **chairs**, **staff lockers**, and **individual children cubbies**, with grant funds when outfitting these spaces.

HEALTH & SAFETY PROTOCOLS



Improving your classroom space can make cleaning and routines more efficient. Projects such as **installing bathrooms** and **multiple sinks** in each classroom can cut down shared use improve wait times, transitions, and supervision. The purchase of **large appliances**, such as a **commercial dishwasher**, or the installation of a **three-compartment sink** can help your center with the proper sanitation of dishes and toys. Whereas a purchase of a **washer and dryer** can be used for the cleaning of linens and other soft materials.

Recent guidance around COVID-19 recommends making improvements to your facility's ventilation. With research showing that the Delta Variant spreads easier indoors, consider updating your ventilation to increase air quality and decrease the potential spread.

Recommendations such as opening windows and doors can circulate air. Consider using the funding to replace **inoperable windows** or **upgrade door systems**. Also, making **upgrades to your HVAC and air filtration system** can improve air quality. If your facility does not have an HVAC or air filtration, consider purchasing a **High-Efficiency Particulate Air (HEPA) Cleaner** designed to trap particles that people exhale when breathing, talking, coughing, and sneezing. Another purchase to consider to help improve ventilation is a **child-safe fan** to circulate fresh air through spaces.

While outside continues to be a safer choice than indoors. Consider making updates to your outdoor space to improve safety, accessibility, and functionality

SUPERVISION, SAFETY & COMMUNICATION



Grant funds can help make improvements to your facility's security and communication systems. Through the purchase of **camera systems**, you can supervise more efficiently. New regulations for supervision in homes recommend adding camera systems to your facility. **Indoor camera systems** provide additional monitoring during routines, transitions, and play. Installation of **outdoor camera systems** can improve home security and safety. Along with camera systems, **remote communication systems**, such as **intercoms** and **walkie-talkies**, can improve your facility's productivity during high volume times like pick-up and drop-offs.

TO LEARN MORE AND ACCESS THE APPLICATION,
PLEASE VISIT [PHILAFACILITYFUND.ORG!](https://philafacilityfund.org)